

Central Hill Parking Zone Pilot



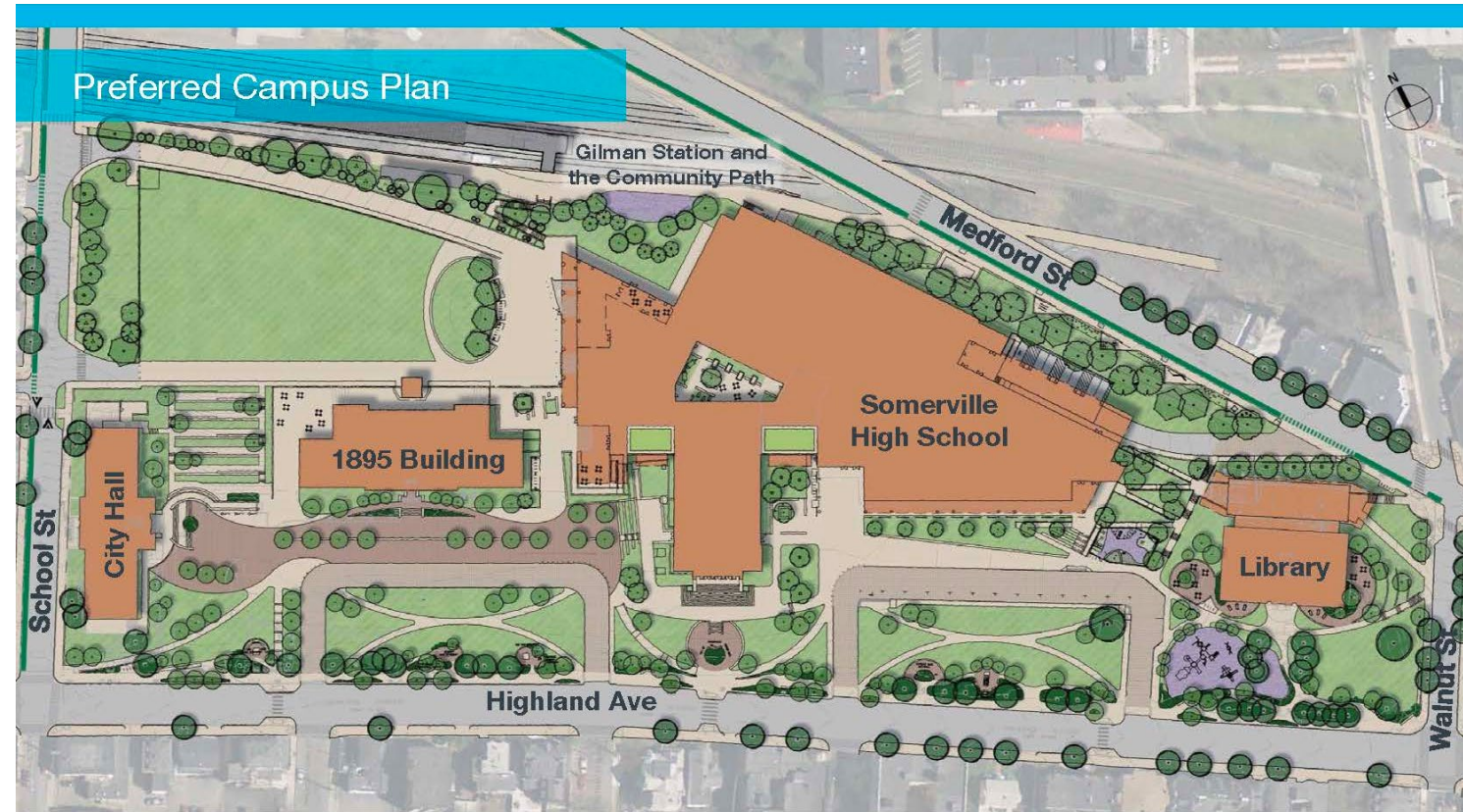
TRAFFIC COMMISSION 6/27/2024

Central Hill Campus Plan Background

With construction of the new Somerville High School and Central Hill campus, a majority of the on-site surface parking on the campus was replaced with public open space and recreation space.

City convened a working group of stakeholders and held a series of public meetings to gather input and share information about managing mobility and parking resources and addressing challenges.

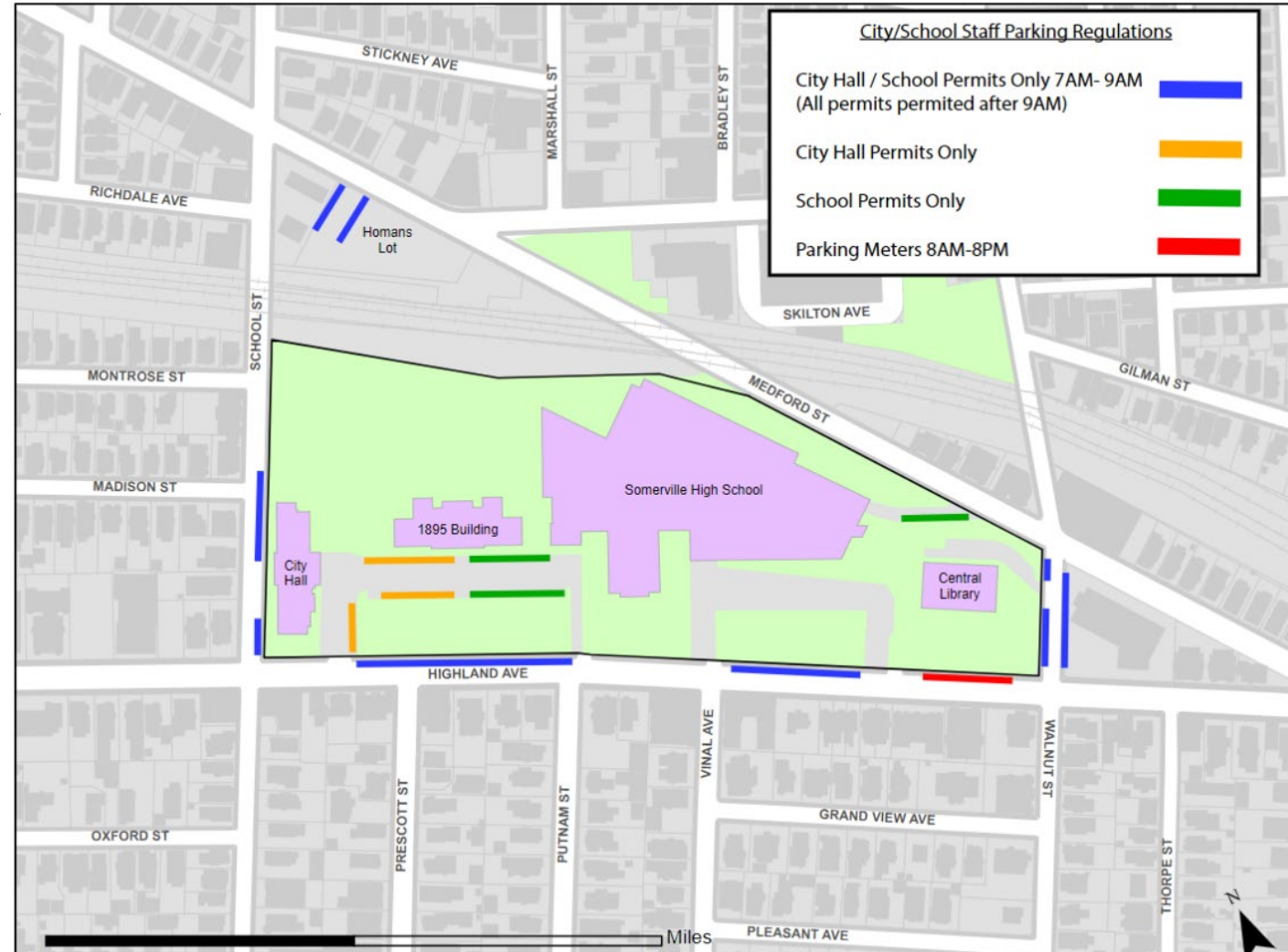
City completed two parking studies to examine the impacts of the SHS/Central Hill parking changes in 2017 and 2018.



Pilot Regulations

“City Hall or School Permit” Parking Only

- These regulations apply:
 - 7am-9am only on school days
 - Highland Ave (north side)
 - School St (east side)
 - Walnut St (both sides)



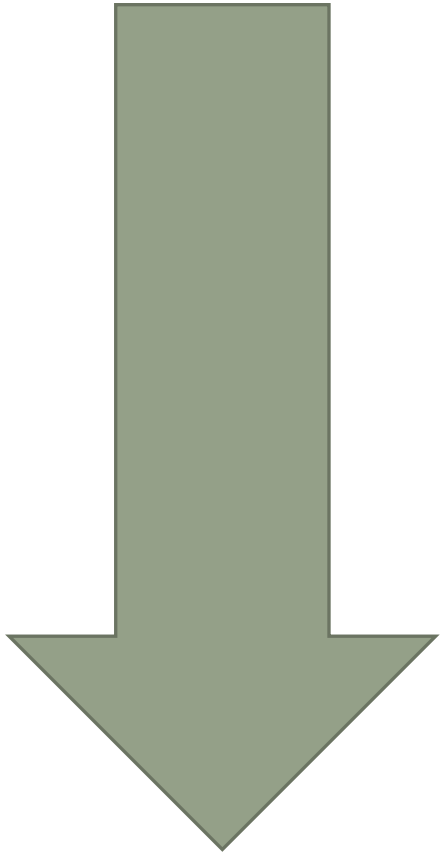
Pilot Objectives

Respond to stakeholder concerns that curb management around Central Hill had become unpredictable and unpleasant for all users – residents, workforce, visitors.

Determine whether City could help reduce parking conflicts by providing time-limited, priority parking on arterial streets for municipal / school workforce.

Collect data on changing curb use patterns in weekday and overnight time periods.

Pilot Timeline



11/18/2021: One-Year Pilot Approved by Traffic Commission

01/24/2022: Signs installed

02/24/2022: Public Hearing by Traffic Board

12/8/2022: Informational Update to Traffic Commission

01/12/2023: Pilot extended to June 30, 2024

Request to Extend until June 30, 2025

Request to extend the Central Hill curbside management pilot, originally approved at the November 18, 2021 Traffic Commission meeting, until June 30, 2025, consisting of the following:

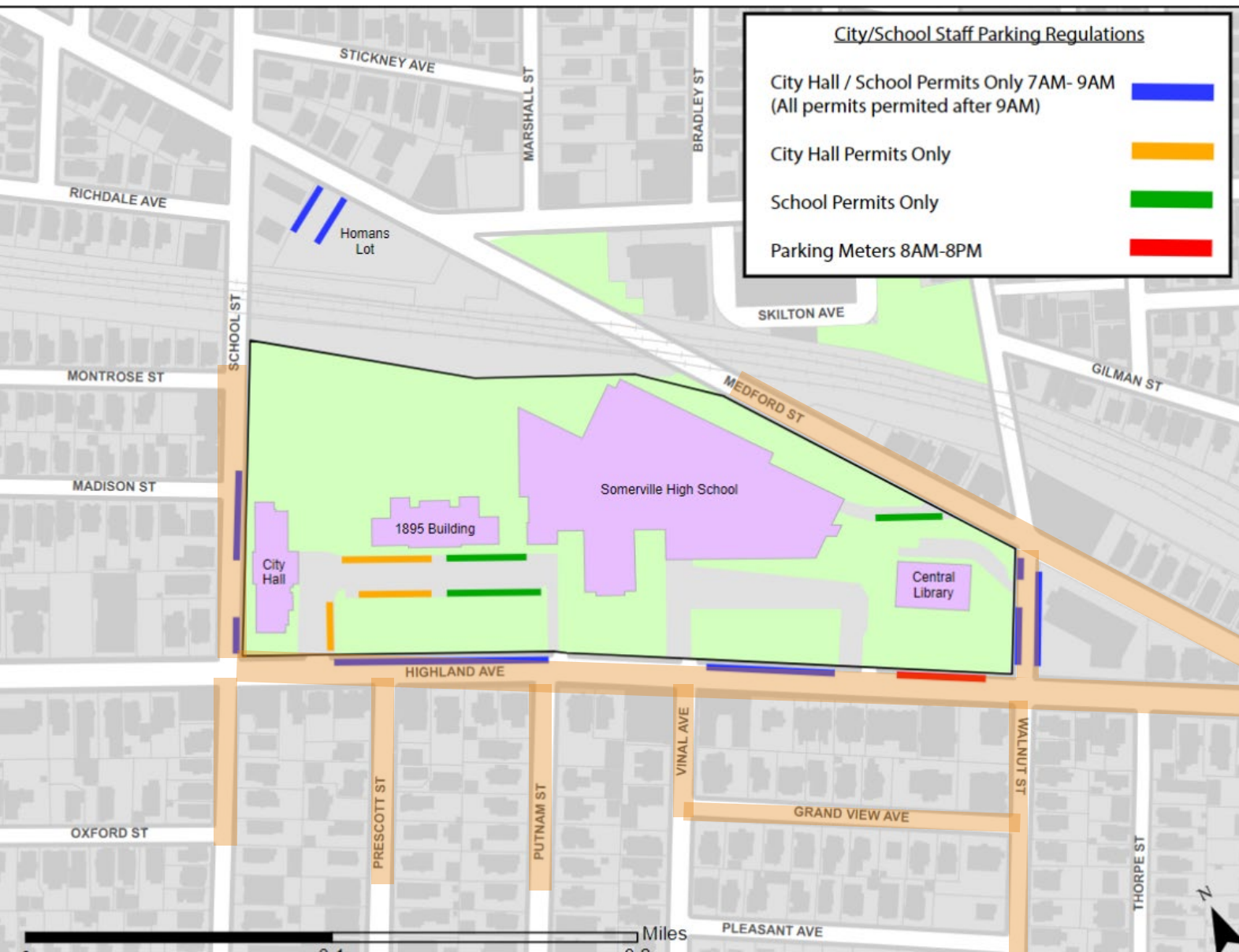
- Approximately 15 parking spaces on the north side of Highland Ave, from opposite Putnam St to the City Hall driveway, regulated as City Hall or School Permit Parking Only from 7AM to 9AM Mon-Fri.
- Approximately 12 parking spaces on the north side of Highland Ave, between the entrance and exit to the Somerville High School Driveway, regulated as City Hall or School Permit Parking Only from 7AM to 9AM Mon-Fri.
- Approximately 7 parking spaces on the west side of Walnut St, between the Highland Ave and Medford St, regulated as City Hall or School Permit Parking Only from 7AM to 9AM Mon-Fri and otherwise as two hour parking except by permit.
- Approximately 9 parking spaces on the east side of Walnut St, between the Highland Ave and Medford St, regulated as City Hall or School Permit Parking Only from 7AM to 9AM Mon-Fri and otherwise as two hour parking except by permit.
- Approximately 9 parking spaces on the east side of School St, between Highland Ave and opposite Madison St, regulated as City Hall or School Permit Parking Only from 7AM to 9AM Mon-Fri and otherwise as two hour parking except by permit.

Data Collection and Analysis

Data Collection Methodologies

Inventoried parking capacity within pilot zone and surrounding streets.

In June 2022, October 2022, April 2023, and November 2023, staff walked study area every half hour between 6:00-9:30 AM counting parked vehicles.



Data Collection Map

Study Findings Summary

Pilot regulations are being used utilized as intended.

- Utilization of SPS staff designated parking spaces peaked between 89-96% of capacity.

Resident parking is available overnight.

- Before 6:30 AM, highest resident parking utilization observed was 79%. (Does not include pilot regulated spaces.)
- Overnight resident parking available on all streets observed in studies, including Highland Ave, School St, Walnut St, Medford St, and more.

SPS Staff Parking Utilization

Includes: SHS concourse, Homans Lot, 7-9am pilot spaces

	School Staff Designated Parking						
	6-6:30am*	6:30-7am	7-7:30am	7:30-8am	8-8:30am	8:30-9am	9-9:30am
June 2022	19%	32%	49%	79%	86%	96%	95%
October 2022	24%	46%	76%	82%	87%	89%	90%
April 2023	21%	33%	56%	72%	79%	89%	88%
November 2023	36%	27%	61%	72%	90%	92%	92%

*June counts collected 5:30-6am

Resident Parking Utilization

Includes: RPP, 2-hour except by permit

	Resident Parking						
	6-6:30am*	6:30-7am	7-7:30am	7:30-8am	8-8:30am	8:30-9am	9-9:30am
June 2022	76%	76%	74%	82%	83%	84%	83%
October 2022	76%	83%	86%	92%	89%	84%	84%
April 2023	79%	76%	81%	80%	83%	86%	85%
November 2023	73%	74%	79%	79%	82%	78%	81%

*June counts collected 5:30-6am

PCO Compliance Study Findings

Weekday morning observations of City/School permit spaces on Highland Ave (between 7:00-7:40am)

Compliance increased through duration of pilot:

- Winter/Spring 2022 (2/24-6/1):
 - 3 open parking spaces per day*
 - 1 illegally parked vehicle per day*
- Fall 2022 (9/7-9/27):
 - 3 open parking spaces per day*
 - 0.5 illegally parked vehicle per day*

*Data are median numbers

Efforts to Reduce Parking Demand

Workforce Transit Pass Program

- Free monthly MBTA subway and bus passes available to all City and SPS staff.

Student Transit Pass Program

- Free MBTA subway and bus passes available to all SPS students Grade 7-12 during September-June.

Free annual Bluebikes bike share membership available to all City and SPS staff

- Bluebikes stations are located at City Hall and Somerville High School

Continue to Study Pilot Conditions

The Mobility Division will continue to study the Central Hill curbside management pilot and collect data and feedback.

Transportation environment in the Central Hill area continues to change.

- Green Line Extension opened in 2022
- Community Path Extension opened in 2023
- Student and workforce transit pass programs
- Ongoing construction-related impacts to circulation & parking